



Regional Recovery Hub

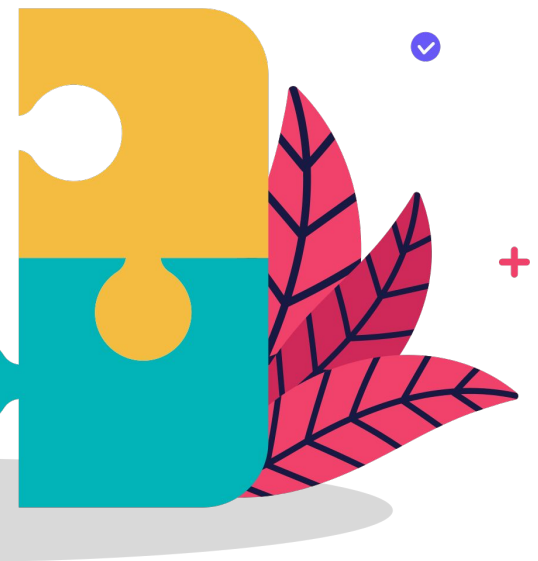
Join us in this collaborative meeting to make great strides for the community. Together, we can achieve healthy people in a healthy AV.



Tuesday • August 15 • 10am-11:30am

Contact: Jeanette at jaquino@avph.org





Ice Breakers

Name one thing you couldn't go
ONE WEEK without?





Healthy People
In a Healthy Antelope Valley

Regional Recovery Hub History

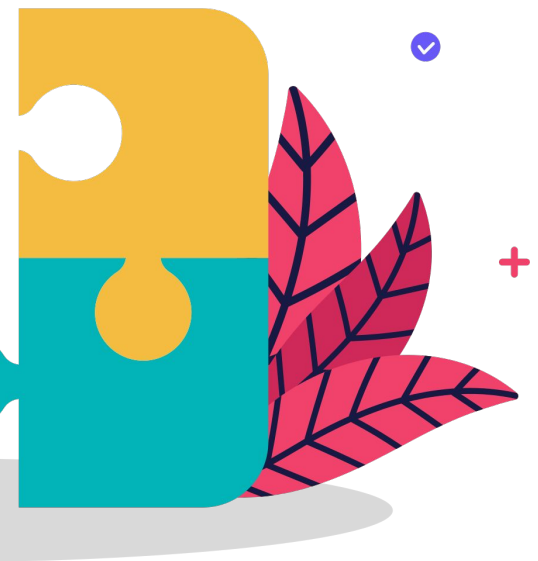
The CCF Regional Recovery Hubs (RRH) represent an emergent model for collective impact that seeks to engage nonprofit organizations and their communities in a shared agenda for addressing the urgent and unprecedented needs across Los Angeles (LA) County due to the COVID-19 pandemic.

In 2021, CCF worked with partners and researchers to analyze needs in communities; it was evident that one of the highlights of the campaign was the regional infrastructure that was built to coordinate and strategize at a local level.

The hub organizations involved with the Regional Recovery Hub program collectively identified and opted-in to one of four Network Priority Areas. These priority areas cut across the key capacity and resource needs associated with equitable recovery efforts. Four priority areas: Community Wealth-Building; Civic Participation/Power-Building; Shared Governance; and Strengthening Organizations.

The Antelope Valley Region chose priority areas of Shared Governance and Strengthening Organizations





Healthy People
In a Healthy Antelope Valley

Meeting Agenda

10:00

Welcome
Icebreaker
Review Agenda

10:15

Mission / Vision compilation & vote

10:30

Website Review; page-by-page

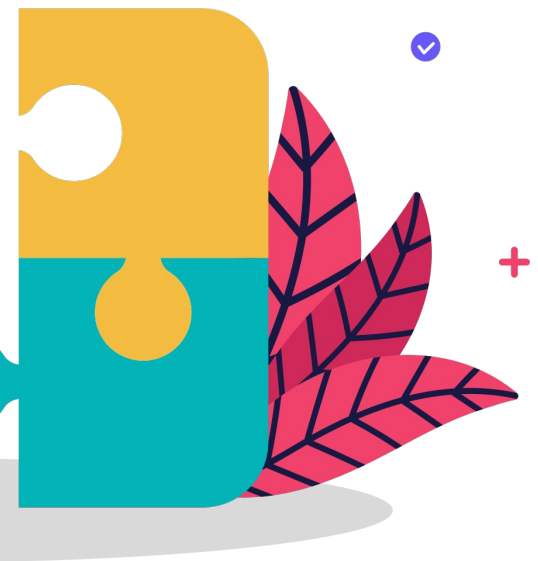
10:50

Mini-Grants: Applications, Guidelines, and Tiers

11:10

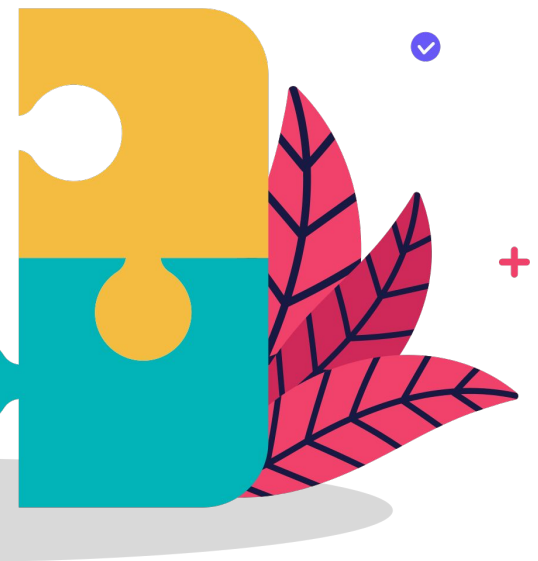
Next Steps | Adjournment





MISSION/VISION Collective



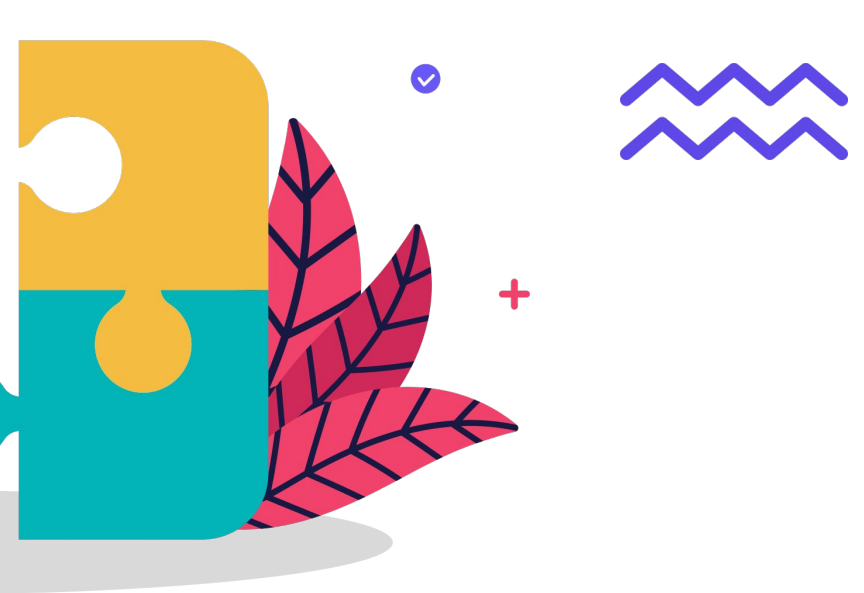


What We Said...

IDEAL FUTURE FOR THE AV

- thriving, healthy, knowledgeable
- more culturally relevant engagement practices
- save the date 3 months in advance on website
- health and mental health determinants
- increase resources to the region via aligned data
- funders education – dropping quick money is not a long-term answer
- data numbers moving in the right direction
- targeted and measurable (population specific) we're no longer in the red

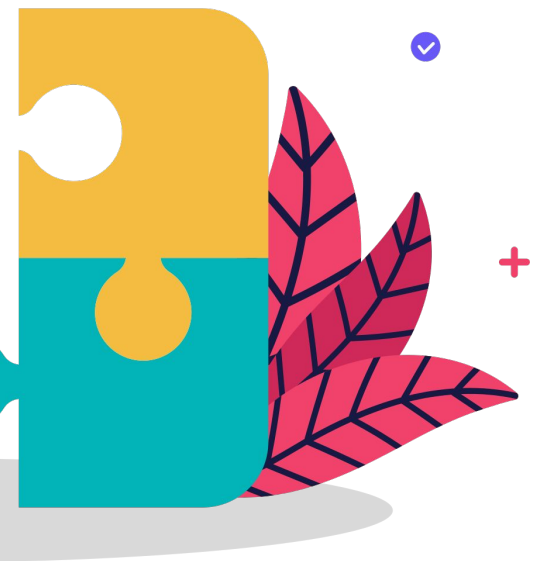




Proposed Mission/Vision

The Regional Recovery Hub aims to utilize relevant, aligned data to increase resources in the region. Through culturally relevant engagement practices, we will work as a collective to become a unified, anti-silo solution to the targeted issues in our Valley.

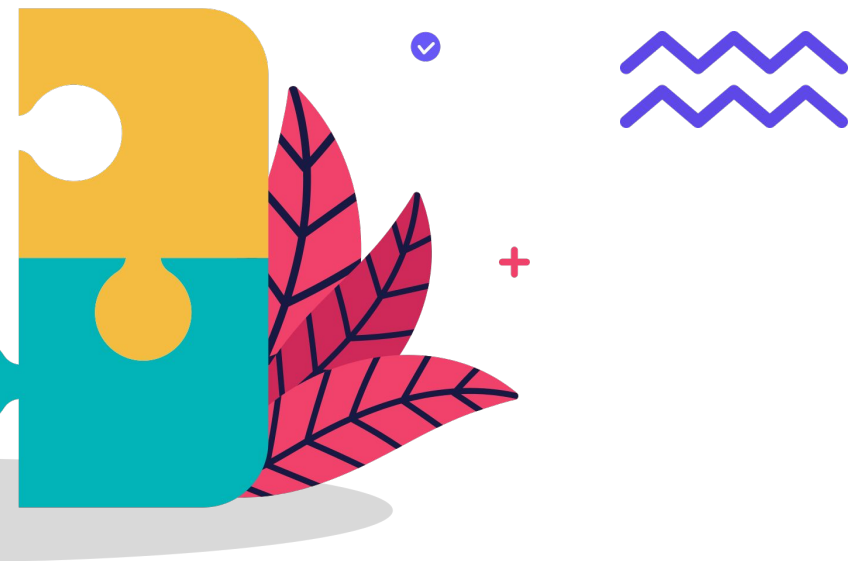




Website Review; page-by-page

<http://www.healthypeopleav.org/>





Mini-Grants: Applications, Guidelines, and Tiers





Next Steps | Adjourndment





Healthy People
In a Healthy Antelope Valley

Phases

Phase 1

Infrastructure Building

- Build Communications Infrastructure: effectively mobilize cross-sector collaborations in their regions, which requires a robust and comprehensive tools to reach diverse audiences
- Building data tools that allow for community-wide access

Phase 2

Network Priorities

(Shared Governance/ decision- making and Strengthening Organizations)

- Developing models of regional governance and decision-making.
- Strategic planning leading to a clear articulation of roles and responsibilities between organizations and their allied partners.
- Developing processes and protocols for community-based grantmaking

AYPH
Antelope Valley Partners for Health
Community Collaborative Promoting Health and Wellness





+



Healthy People
In a Healthy Antelope Valley

Collective Impact

The Five Conditions of Collective Impact

Common Agenda	All participants have a shared vision for change including a common understanding of the problem and a joint approach to solving it through agreed upon actions.
Shared Measurement	Collecting data and measuring results consistently across all participants ensures efforts remain aligned and participants hold each other accountable.
Mutually Reinforcing Activities	Participant activities must be differentiated while still being coordinated through a mutually reinforcing plan of action.
Continuous Communication	Consistent and open communication is needed across the many players to build trust, assure mutual objectives, and create common motivation.
Backbone Support	Creating and managing collective impact requires a separate organization(s) with staff and a specific set of skills to serve as the backbone for the entire initiative and coordinate participating organizations and agencies.



+

